



**ABEILLE**

**MODELES  
PETITES  
BETES**



**ARAIGNEE**



**CHENILLE**



**COCCINELLE**



**ESCARGOT**



**FOURMI**



**GENDARME**



**LEZARD**



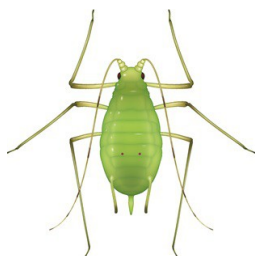
**LIMACE**



**MOUCHE**



**PAPILLON**



**PUCERON**



**PUNAISE**



**VER DE TERRE**