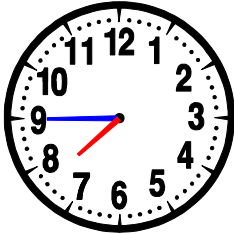


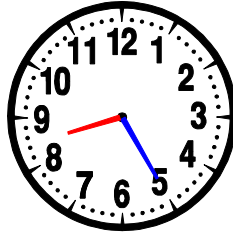
- Quelle heure est-il ?



07 : 45

OU

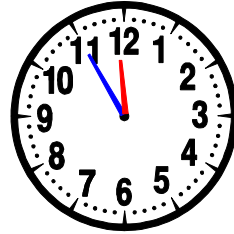
19 : 45



08 : 25

OU

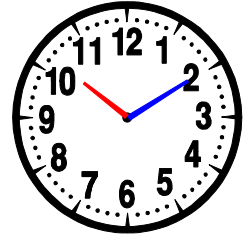
20 : 25



11 : 55

OU

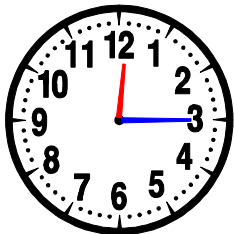
23 : 55



10 : 10

OU

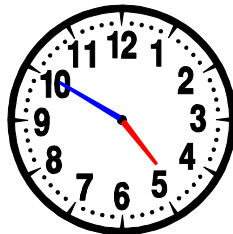
22 : 10



12 : 15

OU

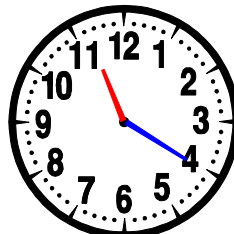
00 : 15



04 : 50

OU

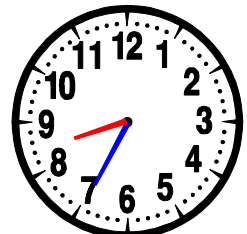
16 : 50



11 : 20

OU

23 : 20

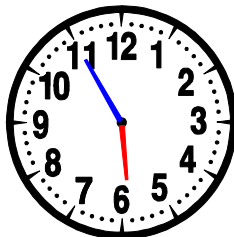


08 : 35

OU

20 : 35

- Entoure la bonne heure :

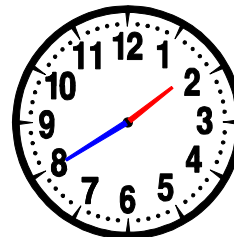


06 : 55

05 : 55

11 : 30

06 : 11



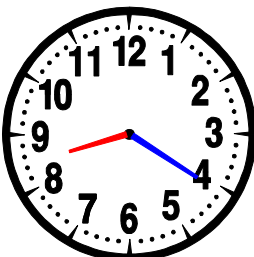
02 : 08

13 : 40

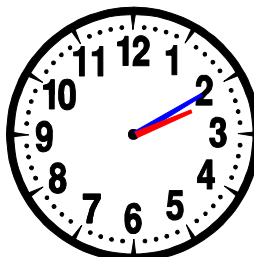
02 : 40

13 : 08

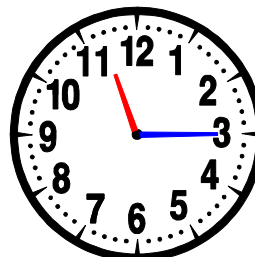
- Dessine les aiguilles des horloges suivantes :



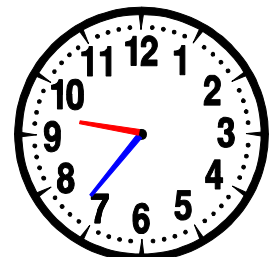
08 : 20



14 : 10



11 : 15



21 : 37