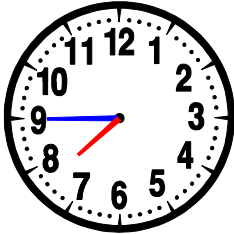
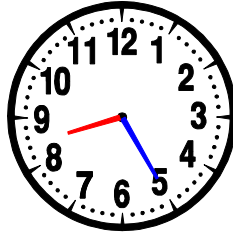


- Quelle heure est-il ?



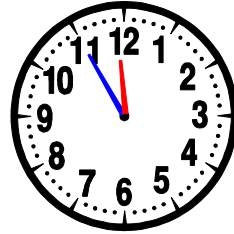
07 : 45
OU
19 : 45



..... :

OU

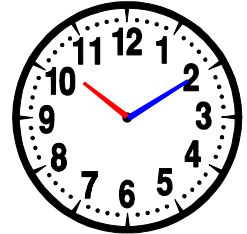
..... :



..... :

OU

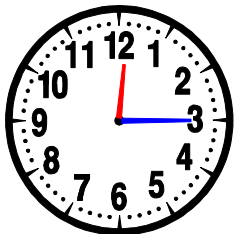
..... :



..... :

OU

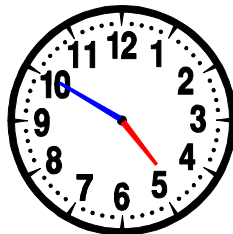
..... :



..... :

OU

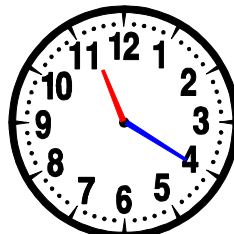
..... :



..... :

OU

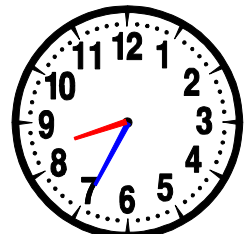
..... :



..... :

OU

..... :

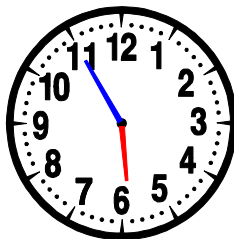


..... :

OU

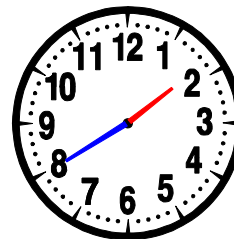
..... :

- Entoure la bonne heure :



06 : 55 11 : 30

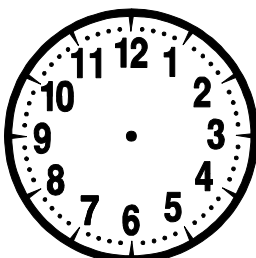
05 : 55 06 : 11



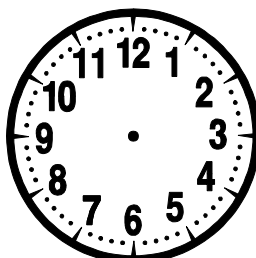
02 : 08 13 : 40

02 : 40 13 : 08

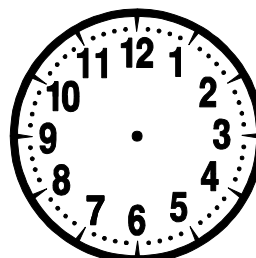
- Dessine les aiguilles des horloges suivantes :



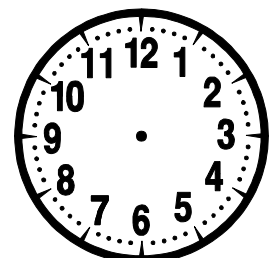
08 : 20



14 : 10



11 : 15



21 : 37